

Paste 2026

14–16 April 2026 | InterContinental Lisbon,
Lisbon, Portugal

See inside
for the
program

Paste 2026 seeks to explore the considerations needed to raise the mining industry leaders' awareness of how important environmental stewardship is to long-term industry sustainability, with regard to their tailings facilities.

We look forward to welcoming experts and practitioners from around the world to Lisbon for Paste 2026!



Collaborating Organisations

Conference chair



Stephen Wilson
Managing Director – Europe
Paterson & Cooke, UK

Keynote paper presenters



Dana Cartwright
Senior Manager, Innovation
ICMM, UK



Professor Antonio da Fonseca
Professor
University of Porto, Portugal

Opening Speaker



Sara Töyrä
Dam Safety Specialist
Luossavaara-Kiirunavaara AB
(LKAB), Sweden

Invited Speaker



Christian Kujawa
Subject Matter Expert - Tailings
Paterson & Cooke, USA

SUN 12 APRIL	MON 13 APRIL	TUES 14 APRIL	WED 15 APRIL	THUR 16 APRIL	FRI 17 APRIL
Mine Backfill Design and Operation Workshop	Guiding Success in Filtered Stacked Tailings Projects Workshop	Paste 2026 Lisbon, Portugal			Rheology Fundamentals for Slurries and Pastes Workshop
Welcome Function		UG Backfill Operators' Evening	Conference Dinner	Site Visits	Co-disposal Opportunities for Waste Rock and Tailings Workshop

07:00 REGISTRATION

SESSION 1: TAILINGS – VISION AND REALITY | PLENARY ROOM: COIMBRA

CHAIR *AB Fourie, The University of Western Australia, Australia*



08:30 Welcome and introduction *S Wilson, Paterson & Cooke, UK*

08:40 OPENING SPEAKER *S Töyrä, LKAB, Sweden*

09:00 KEYNOTE ADDRESS Re-imagining tailings: a vision for safe, sustainable mining *D Cartwright, T Chavez Matus, M Yokota, O Newton, T Kareemulla, ICMM, UK*

09:45 Addressing barriers to filtered tailings adoption: bridging feasibility and operational reality *S Calil, J Palmer, Metso, Australia*

10:05 The adaptability and management of an extractive waste facility under expansion: the case of the Cerro do Lobo tailings storage facility at the Neves-Corvo mine *A Nunes, C Mata, TPF Consultores, Portugal; H Alves, Boliden Somincor, Portugal; A Rodrigues, Boliden, Sweden*

10:25 PRINCIPAL SPONSOR ADDRESS: *MT Bellver Baca, Sika, Switzerland*

10:30 MORNING BREAK

SESSION 2A: TAILINGS STORAGE FACILITY GEOMECHANICS PARALLEL ROOM: COIMBRA B

CHAIR *F Costa, Vale, Brazil*



SESSION 2B: BACKFILL BINDER CHEMISTRY PARALLEL ROOM: COIMBRA A

CHAIR *S Longo, WSP, Canada*



11:15 Evaluation of oil sands thickened tailings consolidation and shear strength parameters using 3 geotechnical testing techniques *LK Kabwe, GW Wilson, D Barsi, University of Alberta, Canada*

White paper: Portland-limestone cements in paste backfill – performance limits and hidden environmental costs *B Salvoldi, Paterson & Cooke, South Africa; T Kraft, Paterson & Cooke, Canada*

11:35 Stability analysis of filtered tailings stack slopes in Brazil using building information modelling and advanced work packaging *TFS de Almeida, AS Norberto, M Lima Barros, JLV Andrade, GDSAI Jannuzzi, TPF Engenharia, Brazil*

Utilisation of an engineered calcium-aluminosilicate binder for cemented paste backfill with challenging mineralogy *N Romaniuk, Graymont, Canada; L McFarlane, N Hariharan, Graymont, USA*

11:55 Hydrogeological behaviour of stabilised paste and filtered tailings cover systems under extreme climate conditions *C Rosales, B Courcelles, Polytechnique Montréal, Canada; I Demers, Université du Québec en Abitibi-Témiscamingue, Canada*

Lessons learned on cemented paste backfill strength prediction at the Odyssey Mine *L-P Gélinas, G Belzil, F Rocheleau, R Dupéré, V Cyr, Agnico Eagle Mines, Canada*

12:15 Design of tailings embankments over soft and very soft subgrades *A Spasojevic, P Ahadi, S Elfen, Ausenco, Canada*

12:35 LUNCH

SESSION 3A: TAILINGS CASE STUDIES PARALLEL ROOM: COIMBRA B

CHAIR *L Machuca, Sandfire MATSA, Spain*



SESSION 3B: BACKFILL GEOMECHANICS PARALLEL ROOM: COIMBRA A

CHAIR *R Veenstra, Gold Fields Australia, Australia*

13:35 Closing the loop on iron ore tailings: a case study on value recovery, water reticulation and tailings storage facility footprint *RN Roux, Fraser Alexander (Pty) Ltd, and University of Pretoria, South Africa; PF Lötter, Fraser Alexander (Pty) Ltd, South Africa*

Interpreting laboratory liquefaction test results: the importance of confining pressure to unconfined compressive strength ratios *M Grabinsky, M Jafari, B Thompson, Paterson & Cooke, Canada; R Veenstra, Gold Fields Australia, Australia*

13:55 100 ktd tailings filtration and beyond *J Palmer, S Calil, Metso, Australia*

An update to the Grabinsky et al. (2021) plug strength method *M Grabinsky, M Jafari, B Thompson, Paterson & Cooke, Canada*

14:15 Detailed engineering for the implementation of filtered tailings in Peruvian underground mining *GM Gonzales, G Huilca, WSP, Peru*

Lessons from 2 reticulation-induced shotcrete barricade failures in drift and fill mining *E Psychari, O Mousli, Hellas Gold S.A., Greece; M Yumlu, BGM Consultants, Australia*

14:35 Transforming tailings storage: a comparative study of central thickened discharge versus conventional tailings storage facilities in Western Australia *B Ghahreman Nejad, ATC Williams, and The University of Melbourne, Australia; Z Lu, ATC Williams, Australia*

14:55 AFTERNOON BREAK

SESSION 4A: IN SITU TAILINGS TESTING PARALLEL ROOM: COIMBRA B

CHAIR *GW Wilson, University of Alberta, Canada*

SESSION 4B: BACKFILL CASE STUDIES (1) PARALLEL ROOM: COIMBRA A

CHAIR *D Harty, Northern Star Resources Limited, Australia*

15:30 Partial drainage in tailings using the cone penetration test *G Ferreira, M Garcia, R Conceição, I Lopes, V Rodrigues, H Lopes, TPF Consultores, Portugal*

Critical approaches and methodologies for selecting backfill solutions and plant location for Sociedad Minera El Brocal's Marcapunta underground mine *N Pavlovic, A Hall, C Senis, Responsible Mining Solutions Corporation, Canada; M Enfantes, D Gavidia, P Miniano, CE Sale, Compañía de Minas Buenaventura S.A.A., Peru*

15:50 Placement of compacted filtered tailings within the target range of the standard Proctor curve: experimental results and operational implications *DM da Silva, AN da Silva Neto, MV de Nazare, WP da Silva, BVP Engenharia, Brazil; R Silva, R Saar, A Azevedo, VALE, Brazil*

A comprehensive study of paste recipes for the Victoria project: part 1 *S Taghipoor, KGHM International, Canada; D Dussiaume, WSP, Canada; N Hosseini, KGHM International, Canada*

16:10 In situ measurement of fluid fine tailings rheology *YS Sun, Northern Alberta Institute of Technology, Canada; D McGowan, ConeTec Investigations Ltd, Canada; Y Byrne, ConeTec Investigations Ltd, UK; D Parkinson, ConeTec Investigations Ltd, Canada; H Kaminsky, Northern Alberta Institute of Technology, Canada; J DeJong, University of California, USA*

Coarse tailings backfill design considerations and optimisation: a case study from Malankhand Copper Project *C Lee, WSP, Canada; S Badavath, Hindustan Copper, India; D Chaudhary, WSP, Canada*

16:30 Hydrogeological monitoring of the Cerro do Lobo tailings storage facility using the geophysical method for sustainable groundwater flow detection and tailings management *FJ Martínez-Moreno, Complutense University of Madrid, Spain; A Abreu, Boliden Somincor, Portugal; PA Baltazar-Soares, University of Lisbon, Portugal; J Fernandes, Laboratório Nacional de Energia e Geologia, Portugal; M Oliveira, Boliden Somincor, Portugal*

Framework for the integration of coal ash-brine encapsulation into cemented paste backfill design *S Hareepsad, WSP, South Africa; S Longo, WSP, Canada*

16:50 DAY ONE CLOSE

SESSION 1: ADVANCING PRACTICE | PLENARY ROOM: COIMBRA

CHAIR T Weatherwax, Eldorado Gold Corporation, Spain



09:45 KEYNOTE ADDRESS Improving the sustainability of tailings disposal through better practices in filtered tailings stacks *AJP Viana da Fonseca, CONSTRUCT Institute of Research and Development in Structures and Construction, University of Porto, Portugal; B Guimarães Delgado, WSP, UK*

10:05 Use of fly ash from biomass power plants in mine backfill *A Castilla Flores, S Valdés, Sandfire MATSA, Spain*

10:25 INDUSTRY SPONSOR ADDRESS: *P Antunes, Simem Underground, USA*

10:28 MORNING BREAK

SESSION 2A: DEWATERING TEST WORK PARALLEL ROOM: COIMBRA B



CHAIR P Newman, Anglo American, UK

SessionSponsor

11:05 Ultrafines dewatering: converting field and laboratory test work results into process design criteria *BLD Cocks, BLD Improvement Engineering, South Africa*

11:25 Filtration testing methodology *J Palmer, Metso, Australia*

11:45 Modelling of filtration properties of representative standards of tailings based on quantitative phase analysis *M Carpenito, University of Ferrara, Italy; E Löwer, TU Bergakademie Freiberg, Germany; F Kaswalder, A Grosso, Diemme Filtration srl, Italy; G Cruciani, University of Ferrara, Italy*

12:05 LUNCH

SESSION 3A: FILTRATION TECHNOLOGY PARALLEL ROOM: COIMBRA B

CHAIR S Töyrä, LKAB, Sweden

13:05 Vacuum filters versus filter presses: rethinking technology selection for tailings dry stacking *T Dobler, N Lerchenmüller, J Hahn, BOKELA GmbH, Germany*

13:25 Big, bigger, high-performance disc filter: from idea to production *J Hahn, T Dobler, H Kilic, BOKELA GmbH, Germany*

13:45 AURUM membrane squeeze technology: optimising tailings filtration in filter presses *B Fischer, G Bragin, K Podratzky, LENSER Filtration, Germany*

14:05 Technology comparison of red mud filtration: assessment of washing and de-liquoring performance of vacuum drum filters versus filter presses *K Schröder, D-E Keller, ANDRITZ Separation GmbH, Germany*

14:25 AFTERNOON BREAK

15:00 PANEL 1: Improving economics to enable large tonnage filtered tailings applications *R Cooke, Paterson & Cooke, USA; F Costa, Vale, Brazil; J Scalia, Colorado State University, USA; J Verde, Knight Piésold, UK*

SESSION 4: TAILINGS MANAGEMENT METHOD ASSESSMENT | PLENARY ROOM: COIMBRA

CHAIR M Oliveira, Boliden Somincor, Portugal

15:45 Intergrating building information modelling and environmental, social and governance strategies for the sustainable management of filtered tailings storage facilities *TFS de Almeida, TC Melo, AS Noberto, ML Barros, TPF Engenharia, Brazil*

16:05 Applying the material point method for *Global Industry Standard on Tailings Management* compliance *A Kerguelen, A Calvo, M Sepúlveda, D Cobos, SRK Consulting, Colombia; A Lizzano, SRK Consulting, Canada*

16:25 DAY TWO CLOSE

18:30 CONFERENCE DINNER

SESSION 2B: TAILINGS STORAGE FACILITY DESIGN PARALLEL ROOM: COIMBRA A



CHAIR S Castro, Paterson & Cooke, Spain

SessionSponsor

A robust numerical framework for non-Newtonian tailings flows in dam breach scenarios *N Skifa, J McKenna, V Glenis, Newcastle University, UK*

Rheology matters: simulating dilute-to-dry tailings dam breaks *R García, J Artigas, Hydronia LLC, USA; S Martinez, P García-Navarro, J Murillo, Universidad Zaragoza, Spain; A Correa, BrazilHydro, Brazil*

Paste and thickened tailings transportation: flow characterisation *S Javadi Rudd, ATC Williams, Australia; A Thomas, Slurry System Engineering, Australia; B Pirouz, ATC Williams, Australia*

SESSION 3B: CLOSURE CONSIDERATIONS PARALLEL ROOM: COIMBRA A

CHAIR MT Bellver Baca, Sika, Switzerland

Predicting material properties of commingled waste rock and tailings *D Barsi, GW Wilson, University of Alberta, Canada*

Deposition planning, spigoting, and pond management for the closure of a thickened tailings facility *K Sánchez, V Parra Arroyo, Sandfire MATSA, Spain*

A closure practitioner's perspective on paste, thickened and filtered tailings *SJ Finucane, Pershke Consulting Pty Ltd, Australia*



Accessing geomechanical excellence

ACG Online Repository of Conference Proceedings

The ACG Online Repository aims to provide the mining geomechanics fraternity with open access to many of these peer-reviewed conference papers that may assist readers to maintain and develop their skills, knowledge and capabilities. Setting a benchmark for technology transfer and accessibility, this valuable online resource will continue to develop and grow with each new ACG event.

View the current offering, including a wide range of paste and tailings papers at papers.acg.uwa.edu.au

SESSION 1: VALUING GOOD PRACTICE PLENARY ROOM: COIMBRA		SIMEM UNDERGROUND	
CHAIR <i>AJP Viana da Fonseca, University of Porto - CONSTRUCT Research Centre, Portugal</i>		Session Sponsor	
08:30	INVITED SPEAKER Removing constraints to tailings <i>C Kujawa, Paterson & Cooke, USA</i>		
09:15	A field trial demonstrating CO ₂ removal through enhanced weathering in mine tailings: design, commissioning and early performance of a European Union-funded pilot <i>R Shiimi, W Savage, E Mouchos, Mine Environment Management Ltd, UK; O Brussee, E Ronne, Boliden AB, Sweden; S Pearce, Mine Environment Management Ltd, UK</i>		
09:35	PANEL 2: Motivating for more expensive tailings management options: How do we value the environmental, social, and governance benefits? <i>P Newman, Anglo American, UK; E Harris, SRK Consulting, UK; M-H Turgeon, IAMGOLD, Canada; B Wickland, WSP, Canada; S Gordon, Satarla, UK</i>		
10:20	MORNING BREAK		
SESSION 2A: THICKENING TECHNOLOGY PARALLEL ROOM: COIMBRA B		MASTER® BUILDERS SOLUTIONS	SESSION 2B: PASTE AND THICKENED TAILINGS RETICULATION SYSTEMS PARALLEL ROOM: COIMBRA A
CHAIR <i>T Wisdom, SRK Consulting, USA</i>		Session Sponsor	ABEL® Pump Technology
			Session Sponsor
10:55	A fluid-structure interaction study of upset load from material build-up in raked thickeners <i>Y Lu, T Sok, J Scott, C Gilbert, FLSmith, USA</i>	Paste plant feed optimisation using a piston diaphragm pump <i>U Gamboa, ABEL, Spain; A Castilla Flores, Sandfire MATSA, Spain; S Castro, Paterson & Cooke, Spain</i>	
11:15	Implementation of a deep cone thickener and pumping system to transform an existing conventional tailings dam into paste tailings <i>G Huilca, WSP, Peru</i>	Importance of transient analysis in successful design and operation of underground paste distribution systems <i>KJ Creber, Paterson & Cooke, Canada; LDC Correia, Paterson & Cooke, South Africa</i>	
11:35	Optimising thickener performance: non-nuclear underflow density control using multipoint calibration <i>JB Kruyswijk, RH Maas, S Seuleanu, Rhosonics Analytical, Netherlands</i>	From rheology to reality: how intelligent software is transforming backfill design and execution <i>J Armstrong, MineSmart Solutions, UK; J Quiala, Nevada Gold, USA. Presented by B Jehan, MineSmart Solutions, UK</i>	
11:55	Reducing water consumption by online measuring of rheology using a pipe rheometer <i>B Nieuwboer, IHC Mining, Netherlands; A Talmon, Delft University of Technology, Netherlands; G Hamú, IHC Mining, Netherlands</i>		
12:15	LUNCH		
SESSION 3A: POLYMER TECHNOLOGY AND CASE STUDIES PARALLEL ROOM: COIMBRA B		SESSION 3B: BACKFILL CASE STUDIES (2) PARALLEL ROOM: COIMBRA A	
CHAIR <i>H Kaminsky, Northern Alberta Institute of Technology, Canada</i>		CHAIR <i>M Costa e Silva, Instituto Superior Ecnico, Portugal</i>	
13:15	Evaluation of rheology-modifying and conventional flocculants across various tailings through a dynamic thickening test <i>A Matinin, SNF, France; M Bower, SNF, UK; A Bonneau, SNF, France</i>	Field monitoring of an undercut paste backfill and implications for analysis and design <i>M Jafari, M Grabinsky, Paterson & Cooke, Canada; P Chacaltana, W Wei, Agnico Eagle Mines, Canada</i>	
13:35	Modular containerised flocculant systems: a fast-track and cost-effective solution for tailings treatment <i>J Bonnier, F Gathier, SNF, France</i>	Rio Tinto Kennecott manufactured paste backfill: initial concept to pilot testing <i>J-L Roberge, E Tomini, B Chaudoin, Responsible Mining Solutions Corporation, Canada; K Moran, C McGinn, N Jovicic, S Timballah, Rio Tinto, USA</i>	
13:55	Stacked tailings without pressure filtration: pilot-scale application of ATA rapid dewatering technology <i>AJ Fischmann, Clean TeQ Water, Australia; J van der Linde, C Spagnuolo, Clean TeQ Water, South Africa</i>	Optimisation of paste backfill at the LZ5 plant, LaRonde Complex <i>J Eloundou Bana, Agnico Eagle Mines, Canada; S Arcila-Gut, Sika Europe Management AG, Switzerland; F Beland, Sika Canada, Canada</i>	
14:15	AFTERNOON BREAK		
14:50	PANEL 3: Designing the underground distribution system of the future: current trends, best practice, and what the future holds <i>R Veenstra, Gold Fields Australia, Australia; LDC Correia, Paterson & Cooke, Canada; L-P Gélinas, Agnico Eagle Mines, Canada; D Harty, Northern Star Resources Limited, Australia; G MacGregor, Imatech ArmorPIPE Australia</i>		
SESSION 4: GEOMORPHOLOGY AND DISPOSAL MANAGEMENT PLENARY ROOM: COIMBRA			
CHAIR <i>S Wilson, Paterson & Cooke, UK</i>			
15:35	Geomorphology of thickened tailings beaches: insights from field deposition and full-scale trials <i>B Pirouz, S Javadi Rudd, KD Seddon, ATC Williams, Australia</i>		
15:55	Refinements to a dual mound central deposition tailings facility <i>D Accadia, WSP, Australia; P O'Kane, Cobar Management Pty Ltd, Australia</i>		
16:15	Monitoring of the surface disposal of an iron ore tailings slurry <i>A de Oliveira Faria, GH da Silva Pinto, MP dos Santos Júnior, Pimenta de Ávila, Brazil; TM Miranda, VL Thums, VALE, Brazil</i>		
16:35	FAREWELL ADDRESS AND PASTE 2027 ANNOUNCEMENT		
16:45	CONFERENCE CLOSE		

Workshops

Mine Backfill Design and Operation Workshop

12–13 April 2026 | Évora Room, InterContinental Hotel, Lisbon, Portugal

Guiding Success in Filtered Stacked Tailings Projects Workshop

13 April 2026 | Coimbra A Room, InterContinental Hotel, Lisbon, Portugal

Rheology Fundamentals for Slurries and Pastes Workshop

17 April 2026 | Nazaré Room, InterContinental Hotel, Lisbon, Portugal

Co-disposal Opportunities for Waste Rock and Tailings Workshop

17 April 2026 | Sesimbra Room, InterContinental Hotel, Lisbon, Portugal

Other Events

Underground Backfill Operators' Networker

14 April 2026 | Lisbon, Portugal

Dean Harty and Dr Ryan Veenstra invite you to an informal networker with your peers and invited guests to discuss shared learnings for underground backfill operators. Spaces are limited. Please express your interest in attending via the link below and you'll be advised if your attendance is confirmed.

Paste 2026 Dinner (Limited spots remaining)

15 April 2026 | Quinta do Gradil, Portugal

After a guided walk through the Quinta do Gradil vineyards and cellars, gather at the historic "yellow house" for a three-course dinner in the winery's restaurant. Each course is carefully paired with Quinta do Gradil wines, creating a dining experience that captures the flavours of Portugal.

Sandfire MATSA site visit

16–17 April 2026 | Aguas Teñidas Mine, Spain

Sandfire MATSA has generously offered their Aguas Teñidas mine for a site visit. The site visit will accommodate 2 groups (Underground paste - sold out, and tailings area/paste plant tour) with a total participation of up to 25 attendees.

Neves Corvo mine site visit

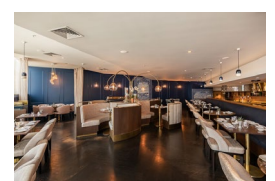
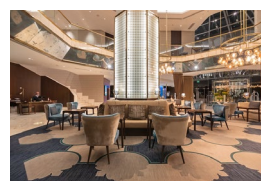
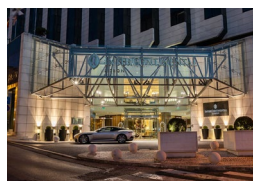
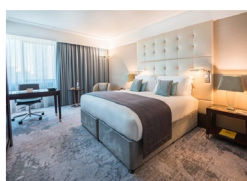
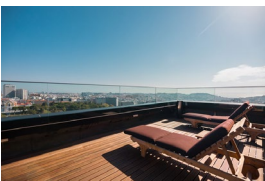
17 April 2026 | Neves Corvo Mine, Portugal

Boliden Somincor generously offered their Neves Corvo mine for a site visit. The structure for the visit accommodates 2 groups (Paste plant tour and tailings area/thickening plant tour), with a total participation of up to 50 attendees.

Learn more at acgpaste.com/associated-events

Conference Venue

Paste 2026 will be held at the InterContinental Lisbon. Conveniently located in central Lisbon, InterContinental Lisbon is a luxury 5-star hotel overlooking the famous Eduardo VII Park and walkable to many attractions. Learn more at acgpaste.com/venue





Collaborating Organisations



CSIRO | The University of Western Australia | Joint Venture

Founding Body

Principal Sponsor



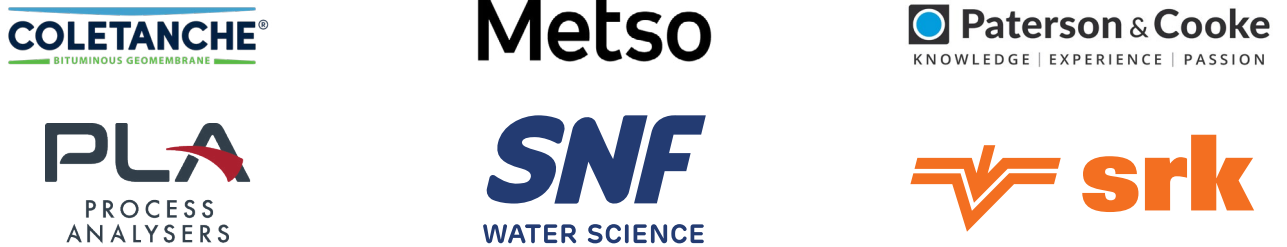
Industry Sponsors



Major Sponsors



Trade Exhibitors



Display Sponsors



WiFi Sponsor



Open Access Sponsor



Lanyards Sponsor



Notebook Sponsor



Supporting Organisation

